

Arabian Sea humpback whales (ASHW) are present year-round in the Arabian Sea. Other humpbacks migrate from tropical and polar/temperate waters.



© Arno Jansen

Seasonal upwelling of cold, nutrient rich waters provides food for the whales that also mate, calve, and nurse their young in the Arabian Sea.



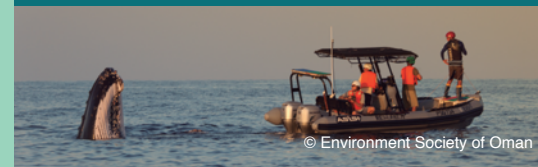
© Environment Society of Oman

ASHW became isolated from other populations in the Indian Ocean approximately 70,000 years ago.



© Environment Society of Oman

Research conducted in Oman since 2000 includes photo-ID, genetic studies, and satellite tagging. But little is known about ASHW in other parts of the Arabian Sea.



© Environment Society of Oman

# ARABIAN SEA HUMPBAC WHALES

## THREATS TO ASHW



Bycatch; 30-40% of whales photographed off Oman have scars from entanglement in fishing gear.



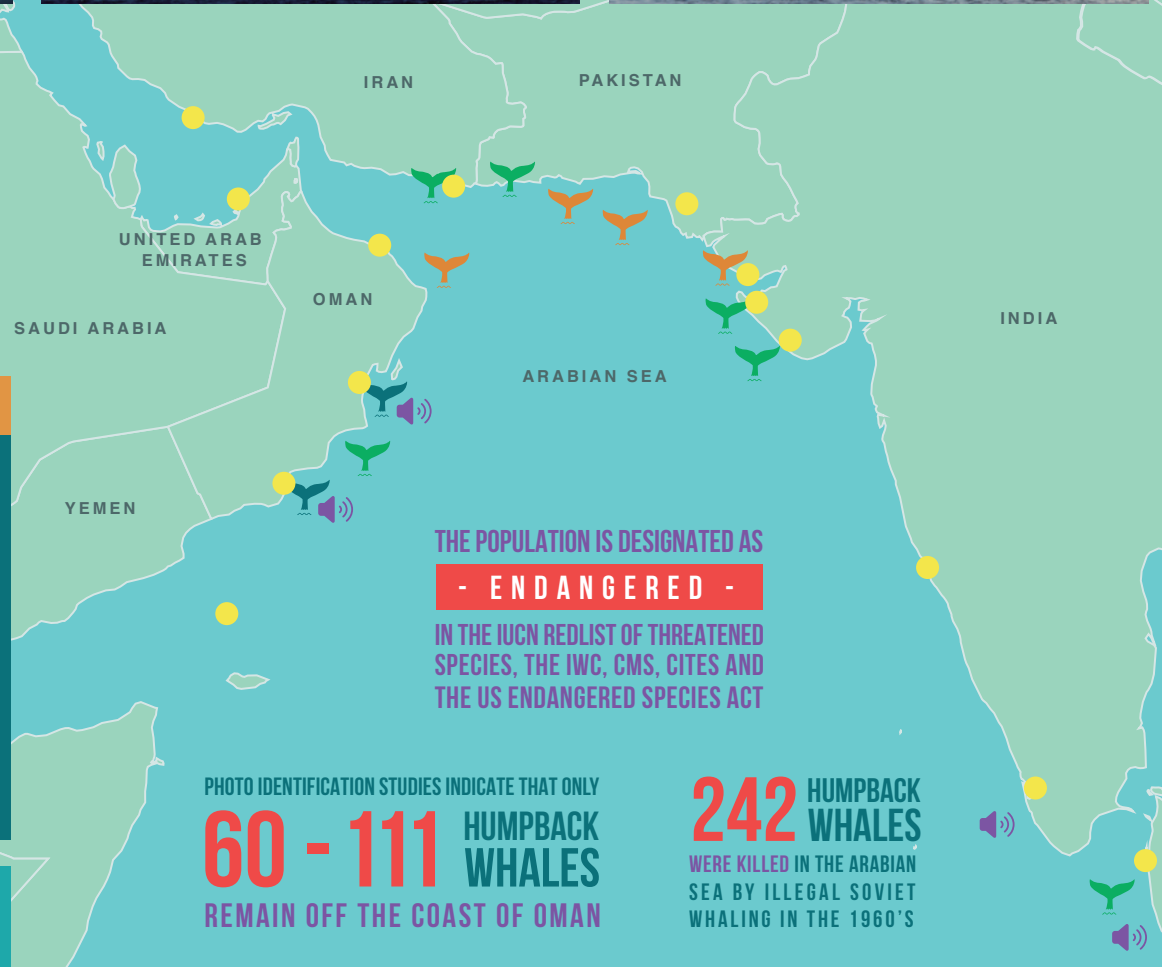
Ship strike: The region hosts many ports and some of the busiest shipping lanes in the world.



Underwater noise and risk of pollution from oil and gas activities.



Habitat degradation from coastal development, shipping and construction noise.



WITHOUT ACTION, THIS SMALL, UNIQUE POPULATION OF WHALES COULD DISAPPEAR

## KNOWLEDGE GAPS THAT HINDER EFFECTIVE CONSERVATION:

- How far does the ASHW range extend outside of Oman, and which areas are critical for feeding and breeding?
- How many whales remain in the Arabian Sea?
- How can threats be most effectively mitigated?



ARABIAN SEA WHALE NETWORK MEMBERS ARE COLLABORATING TO ADDRESS THESE KNOWLEDGE GAPS

Research methods include collection of data from fishers and other types of vessels; dedicated boat surveys with photo-identification; satellite tracking; genetic sampling and acoustic monitoring. The network aims to work with government, fisheries and industry to mitigate the threats of fishing gear entanglement, ship strike, and habitat degradation.

If you are interested in learning HOW YOU CAN SUPPORT these efforts, please visit our website: [arabianseawhalenetwork.org](http://arabianseawhalenetwork.org)

LEGEND



AREAS WHERE ASHW REGULARLY OBSERVED DURING RESEARCH



AREAS WHERE ASHW REPORTED BY FISHERS AND OTHERS



ASHW STRANDINGS OR ENTANGLEMENTS



RECORDINGS OF ASHW SONG



LOCATIONS OF ARABIAN SEA WHALE NETWORK MEMBER PROJECTS

THE ARABIAN SEA WHALE NETWORK IS AN INFORMAL COLLABORATION SUPPORTED BY:



INTERNATIONAL WHALING COMMISSION



طرح سرزمین  
PLAN4theLAND



Five Oceans  
Environmental Services LLC



Oceanswell



EWS WWF



Ministry of Marine Resources  
University of Marau



WWF